



		US	Nevada	Rank
		Rate	Rate	1 = best
Foreclosure Filings Rate	Mar '17	0.06%	0.12%	47
Home Price Index (FHFA)*	2016q4 v 2015q4	5.9%	9.0%	5
	2016q4 v 2011q4	32.8%	91.7%	1
Wage & Salary Disbursements	2016q4 v 2015q4	4.0%	7.0%	1
Personal Income	2016q4 v 2015q4	3.7%	6.1%	1
Unemployment*	Mar '17 v Mar '16	1.5%	2.9%	5
Unemployment**	Mar '17	4.5%	4.8%	33

*Not seasonally adjusted.
**Seasonally adjusted.

It is remarkable how often the first interpretations of new evidence have confirmed the preconceptions of its discoverer.
— John Reader

State General Fund Revenues Historical Collections and Year-to-Date FY 2017 Collections compared to Year-to-Date FY 2016

General Fund Revenue Sources	FY 2014 Actual			FY 2015 Actual			FY 2016 Actual			FY 2017 Actual		
	millions	millions	%	millions	millions	%	millions	millions	%	millions	millions	%
Sales Tax	\$931.3	\$42.7	4.8	\$994.8	\$63.4	6.8	\$1,036.5	\$41.8	4.2	\$710.7	\$32.8	4.8
Gaming Percentage Fees Collections [1, 4]	\$682.3	\$3.5	0.5	\$693.2	\$10.9	1.6	\$676.0	(\$17.2)	(2.5)	\$592.8	\$11.6	2.0
Modified Business Tax - Financial, NonFinancial and Mining [2, 3, 4]	\$384.9	(\$1.7)	(0.4)	\$411.9	\$27.0	7.0	\$561.8	\$149.9	36.4	\$273.7	(\$1.6)	(0.6)
Insurance Premium Tax [4]	\$263.5	\$15.0	6.0	\$292.7	\$29.1	11.1	\$309.1	\$16.4	5.6	\$182.5	\$34.9	23.7
Live Entertainment Tax - Gaming [5]	\$139.2	\$13.4	10.7	\$130.9	(\$8.3)	(6.0)	\$112.0	(\$18.9)	(14.4)	\$75.5	(\$10.7)	(12.4)
Cigarette Tax [6]	\$79.6	(\$3.4)	(4.1)	\$92.8	\$13.1	16.5	\$153.0	\$60.3	65.0	\$116.6	\$26.0	28.6
Commercial Recordings [7]	\$66.7	\$1.6	2.5	\$68.8	\$2.2	3.3	\$73.7	\$4.9	7.1	\$60.7	(\$0.4)	(0.6)
Real Property Transfer Tax	\$60.0	\$5.1	9.2	\$64.2	\$4.2	6.9	\$75.8	\$11.6	18.0	\$42.3	\$2.8	7.0
Liquor Tax	\$41.8	\$2.0	4.9	\$42.7	\$0.9	2.1	\$43.9	\$1.2	2.9	\$27.5	(\$1.0)	(3.5)
Transportation Connection Tax [8]	\$0.0	\$0.0	n/a	\$0.0	\$0.0	n/a	\$11.9	\$11.9	n/a	\$14.8	\$14.8	n/a
Governmental Services Tax-Depreciation [9]	\$62.3	(\$1.2)	(1.9)	\$62.9	\$0.6	1.0	\$66.7	\$3.9	6.2	\$28.5	(\$19.2)	(40.3)
Governmental Services Tax-Commissions & Penalties [10]	\$0.0	(\$25.1)	(100.0)	\$28.8	\$28.8	n/a	\$0.0	(\$28.8)	(100.0)	\$0.0	\$0.0	n/a
Business License Fee [11]	\$72.2	\$3.2	4.6	\$75.4	\$3.2	4.4	\$103.0	\$27.7	36.7	\$84.6	(\$0.2)	(0.2)
State Share Various Local SUT	\$27.2	\$1.4	5.6	\$29.0	\$1.8	6.5	\$30.3	\$1.3	4.6	\$20.9	\$1.1	5.6
State Share LSST [12]	\$9.2	\$0.4	4.6	\$9.7	\$0.5	5.8	\$10.2	\$0.4	4.4	\$6.9	\$0.3	4.2
Live Entertainment Tax - NonGaming [5]	\$15.0	\$3.3	28.0	\$15.0	(\$0.0)	(0.1)	\$16.5	\$1.6	10.5	\$16.7	\$8.5	103.7
Quarterly Slot Tax [2, 13]	\$19.7	(\$1.0)	(4.9)	\$19.5	(\$0.2)	(1.2)	\$19.1	(\$0.4)	(1.9)	\$15.3	\$0.7	4.5
Other General Fund Revenues [14]	\$168.4	(\$4.9)	(2.8)	\$176.4	\$8.0	4.7	\$177.0	\$0.6	0.4	\$130.2	\$4.9	4.0
Net Proceeds of Minerals [15]	\$26.2	(\$85.1)	(76.4)	\$51.7	\$25.5	97.3	\$34.7	(\$17.1)	(33.0)	\$0.0	\$0.0	n/a
Unclaimed Property	\$17.5	(\$15.5)	(46.9)	\$24.3	\$6.8	39.1	\$39.0	\$14.7	60.3	\$0.0	\$0.0	n/a
Commerce Tax [16]	\$0.0	\$0.0	n/a	\$0.0	\$0.0	n/a	\$143.5	\$143.5	n/a	\$25.9	\$25.9	n/a
Year-End Transfers	\$0.0	(\$19.2)	(100.0)	\$0.0	\$0.0	n/a	\$0.0	\$0.0	n/a	\$0.0	\$0.0	n/a
Totals	\$3,066.9	(\$65.7)	(2.1)	\$3,284.5	\$217.5	7.1	\$3,693.8	\$409.4	12.5	\$2,426.2	\$131.3	5.7
Lodging Tax [17]	\$141.1	\$12.4	9.6	\$150.5	\$9.4	6.6	\$167.2	\$16.7	11.1	\$115.4	\$6.4	5.8

[1] Gaming Percentage Fees are reported in the month following the month of actual gaming activity.

[2] Amounts are reported quarterly.

[3] The rate of the Modified Business Tax for non-financial institutions was changed in FY 2010, FY 2012 and again in FY 2014, which accounts for most of the year-over-year change in revenues in those years. In FY 2010 and FY 2011, the rate was 0.5% on taxable wages up to \$62,500 per quarter and 1.17% on taxable wages above \$62,500. In FY 2012 and FY 2013, taxable wages up to \$62,500 per quarter were not taxed, while those above \$62,500 were taxed at 1.17%. In FY 2014 and FY 2015, taxable wages up to \$85,000 per quarter were not taxed, while those above \$85,000 were taxed at 1.17%. Starting in FY 2016, the rate for non-financial institutions is permanently increased to 1.475% on taxable wages that exceed \$50,000 per quarter and the rate for entities subject to the net proceeds of minerals tax is increased to 2.0%, the same rate paid by financial institutions.

[4] The 2013 and 2015 Regular Sessions and 2014 Special Session of the State Legislature authorized several tax credit programs that directly reduce the tax liability of a taxpayer and thereby decrease certain General Fund revenue collections. See Page 3 for detailed tax credit program information.

[5] Effective October 1, 2015, the structure and tax rate for the live entertainment tax administered by the Gaming Control Board for live entertainment at licensed gaming establishments and the Department of Taxation for live entertainment at all non-gaming establishments. The provisions establish a single 9% tax rate for all venues over 200 people and eliminate the tax on food, beverages and merchandise.

[6] The State imposes a tax of 80 cents per package of 20 cigarettes, 70 cents of which is retained by the State. The 2009 Legislature permanently lowered the collection allowance provided to a taxpayer for collecting and remitting cigarette taxes from 0.5% to 0.25%, effective July 1, 2009. The excise tax on cigarettes increases to \$1.80 beginning on July 1, 2015, of which \$1.70 is deposited into the State General Fund.

[7] Commercial Recording fee increased by \$25 beginning in FY 2016.

[8] A Transportation Connection Tax is equal to 3% of the fare charged to the passenger. For transportation network companies, the excise tax became effective on May 29, 2015, and August 28, 2015, for common motor carriers and taxicabs. The first \$5,000,000 collected in each biennium is required to be deposited to the Highway Fund with the remainder deposited to the General Fund.

[9] Governmental Services Tax proceeds from the 10% depreciation schedule change are transferred to the General Fund in FY 2012, FY 2013, FY 2015, and FY 2016. In FY 2017, 50 percent of the proceeds are deposited in the General Fund and 50 percent will be deposited in the State Highway Fund. They are scheduled to be fully retained by the Department of Motor Vehicles in FY 2018 and beyond.

[10] Governmental Services Tax proceeds from the commissions and penalties are transferred to the General Fund in FY 2015 only. The amount transferred cannot exceed \$23,724,000 in commissions and \$5,037,000 in penalties.

[11] Business License Fees for initial application and annual renewal were increased to \$200 from \$100 beginning in FY 2010. In FY 2016, these fees increase to \$500 for corporations, but stay at \$200 for all other businesses.

[12] The rate of the Local School Support Tax was increased in FY 2010 through FY 2015 to 2.60% from 2.25% previously. Effective July 1, 2015, the 2.60% rate is made permanent.

[13] In FY 2012 and FY 2013, the General Fund retained half of the quarterly fee per slot machine that had been previously dedicated to the Account to Support Programs for the Prevention and Treatment of Problem Gaming.

[14] Collections reported for Other Revenues are preliminary.

[15] Prior to FY 2010, the Net Proceeds of Minerals Tax was collected on net proceeds from the calendar year ending in December of the given fiscal year. From FY 2010 through FY 2013, these taxes were collected based on an estimate of the net proceeds for the calendar year beginning in January of the given fiscal year and ending six months after the close of the given fiscal year, with a "true-up" to account for actual net proceeds due in the following fiscal year. In addition, in FY 2012 and FY 2013, the deduction for health and industrial insurance expenses was eliminated. The prepayment of the Net Proceeds of Minerals Tax is extended to June 30, 2016. The insurance deduction provision is scheduled to revert back to FY 2009 methodology on January 1, 2017.

[16] Commerce Tax is a levy on the gross revenue of a business which is earned in the State of Nevada effective July 1, 2015. The first \$4,000,000 per year in gross revenues earned in the State of Nevada is exempt from the tax. The rate varies based on the industry in which the business is primarily engaged with the industry groupings based on the North American Industry Classification System (NAICS) codes. Businesses which are required to pay the commerce tax are entitled to a credit of 50% of their commerce tax liability against their modified business tax.

[17] Lodging tax revenues were deposited into the General Fund in FY 2010 and FY 2011; they are deposited into the Distributive School Account beginning in FY 2012 and are scheduled to be deposited into the Supplemental School Account in FY 2018 and thereafter.

State General Fund Revenues
Budgeted Amounts Based on May 2017 Economic Forum Forecast

General Fund Revenue Sources before Tax Credits	FY 2017 Budget			Through	FY 2017 Collections vs Budget		
	Total	Yr/Yr Change			Year-to-Date		
	millions	millions	%		Through	Over (Under) Budget	
	millions	millions	%	Through	millions	millions	%
Sales Tax	\$1,087.2	\$50.7	4.9	February	\$710.7	\$0.5	0.1
Gaming Percentage Fees Collections (Gross) [1, 4]	\$731.0	\$30.2	4.3	April	\$622.3	\$7.8	1.3
Modified Business Tax - Financial, NonFinancial and Mining (Gross) [2, 3, 4]	\$609.4	\$43.1	7.6	December	\$312.1	\$5.9	1.9
Insurance Premium Tax (Gross) [4]	\$378.2	\$43.1	12.9	December	\$190.4	\$4.7	2.5
Live Entertainment Tax - Gaming [5]	\$101.7	(\$10.3)	(9.2)	March	\$75.5	(\$0.8)	(1.0)
Cigarette Tax [6]	\$175.0	\$22.0	14.4	February	\$116.6	\$3.5	3.1
Commercial Recordings [7]	\$74.5	\$0.8	1.0	April	\$60.7	(\$1.4)	(2.2)
Real Property Transfer Tax	\$82.0	\$6.2	8.2	December	\$42.3	(\$0.7)	(1.7)
Liquor Tax	\$42.9	(\$1.0)	(2.3)	February	\$27.5	(\$0.2)	(0.7)
Transportation Connection Tax [8]	\$22.8	\$10.9	91.9	February	\$14.8	(\$0.4)	(2.5)
Governmental Services Tax-Depreciation [9]	\$38.2	(\$28.6)	(42.8)	April	\$28.5	(\$0.8)	(2.9)
Governmental Services Tax-Commissions & Penalties [10]	n/a	n/a	n/a	n/a	n/a	n/a	n/a
Business License Fee [11]	\$104.6	\$1.6	1.6	April	\$84.6	(\$2.6)	(3.0)
State Share Various Local SUT	\$32.0	\$1.7	5.6	February	\$20.9	\$0.0	0.0
State Share LSST [12]	\$10.6	\$0.4	4.4	February	\$6.9	(\$0.0)	(0.2)
Live Entertainment Tax - NonGaming [5]	\$25.1	\$8.6	52.1	February	\$16.7	\$1.1	7.0
Quarterly Slot Tax [2, 13]	\$18.8	(\$0.3)	(1.5)	March	\$15.3	\$1.2	8.7
Other General Fund Revenues [14]	\$176.3	(\$0.7)	(0.4)	April	\$130.2	(\$5.4)	(4.0)
Net Proceeds of Minerals [15]	\$18.8	(\$15.9)	(45.9)	n/a	n/a	n/a	n/a
Unclaimed Property	\$27.9	(\$11.0)	(28.3)	n/a	n/a	n/a	n/a
Commerce Tax [16]	\$203.4	\$59.9	41.7	February	\$25.9	\$25.9	n/a
Year-End Transfers	n/a	n/a	n/a	n/a	n/a	n/a	n/a
Tax Credits	(\$147.1)	(\$91.9)	n/a	April	(\$75.9)	\$0.0	0.0
Total Collections after Tax Credits	\$3,813.4	\$119.6	3.2	Various	\$2,426.2	\$38.4	1.6
Lodging Tax [17]	\$179.6	\$12.4	7.4	February	\$115.4	\$0.9	0.7

[1] Gaming Percentage Fees are reported in the month following the month of actual gaming activity.
 [2] Amounts are reported quarterly.
 [3] The rate of the Modified Business Tax for non-financial institutions was changed in FY 2010, FY 2012 and again in FY 2014, which accounts for most of the year-over-year change in revenues in those years. In FY 2010 and FY 2011, the rate was 0.5% on taxable wages up to \$62,500 per quarter and 1.17% on taxable wages above \$62,500. In FY 2012 and FY 2013, taxable wages up to \$62,500 per quarter were not taxed, while those above \$62,500 were taxed at 1.17%. In FY 2014 and FY 2015, taxable wages up to \$85,000 per quarter were not taxed, while those above \$85,000 were taxed at 1.17%. Starting in FY 2016, the rate for non-financial institutions is permanently increased to 1.475% on taxable wages that exceed \$50,000 per quarter and the rate for entities subject to the net proceeds of minerals tax is increased to 2.0%, the same rate paid by financial institutions.
 [4] The 2013 and 2015 Regular Sessions and 2014 Special Session of the State Legislature authorized several tax credit programs that directly reduce the tax liability of a taxpayer and thereby decrease certain General Fund revenue collections. This amount reflects Gross collections (before Tax Credits are applied). See Page 3 for detailed tax credit program information.
 [5] Effective October 1, 2015, the structure and tax rate for the live entertainment tax administered by the Gaming Control Board for live entertainment at licensed gaming establishments and the Department of Taxation for live entertainment at all non-gaming establishments. The provisions establish a single 9% tax rate for all venues over 200 people and eliminate the tax on food, beverages and merchandise.
 [6] The State imposes a tax of 80 cents per package of 20 cigarettes, 70 cents of which is retained by the State. The 2009 Legislature permanently lowered the collection allowance provided to a taxpayer for collecting and remitting cigarette taxes from 0.5% to 0.25%, effective July 1, 2009. The excise tax on cigarettes increases to \$1.80 beginning on July 1, 2015, of which \$1.70 is deposited into the State General Fund.
 [7] Commercial Recording fee increased by \$25 beginning in FY 2016.
 [8] A Transportation Connection Tax is equal to 3% of the fare charged to the passenger. For transportation network companies, the excise tax became effective on May 29, 2015, and August 28, 2015, for common motor carriers and taxicabs. The first \$5,000,000 collected in each biennium is required to be deposited to the Highway Fund with the remainder deposited to the General Fund.
 [9] Governmental Services Tax proceeds from the 10% depreciation schedule change are transferred to the General Fund in FY 2012, FY 2013, FY 2015, and FY 2016. In FY 2017, 50 percent of the proceeds are deposited in the General Fund and 50 percent will be deposited in the State Highway Fund. They are scheduled to be fully retained by the Department of Motor Vehicles in FY 2018 and beyond.
 [10] Governmental Services Tax proceeds from the commissions and penalties were transferred to the General Fund in FY 2012, FY 2013, and FY 2015 only.
 [11] Business License Fees for initial application and annual renewal were increased to \$200 from \$100 beginning in FY 2010. In FY 2016, these fees increase to \$500 for corporations, but stay at \$200 for all other businesses.
 [12] The rate of the Local School Support Tax was increased in FY 2010 through FY 2015 to 2.60% from 2.25% previously. Effective July 1, 2015, the 2.60% rate is made permanent.
 [13] In FY 2012 and FY 2013, the General Fund retained half of the quarterly fee per slot machine that had been previously dedicated to the Account to Support Programs for the Prevention and Treatment of Problem Gaming.
 [14] Collections reported for Other Revenues are preliminary.
 [15] Prior to FY 2010, the Net Proceeds of Minerals Tax was collected on net proceeds from the calendar year ending in December of the given fiscal year. From FY 2010 through FY 2013, these taxes were collected based on an estimate of the net proceeds for the calendar year beginning in January of the given fiscal year and ending six months after the close of the given fiscal year, with a "true-up" to account for actual net proceeds due in the following fiscal year. In addition, in FY 2012 and FY 2013, the deduction for health and industrial insurance expenses was eliminated. The prepayment of the Net Proceeds of Minerals Tax is extended to June 30, 2016. The insurance deduction provision is scheduled to revert back to FY 2009 methodology on January 1, 2017.
 [16] Commerce Tax is a levy on the gross revenue of a business which is earned in the State of Nevada effective July 1, 2015. The first \$4,000,000 per year in gross revenues earned in the State of Nevada is exempt from the tax. The rate varies based on the industry in which the business is primarily engaged with the industry groupings based on the North American Industry Classification System (NAICS) codes. Businesses which are required to pay the commerce tax are entitled to a credit of 50% of their commerce tax liability against their modified business tax.
 [17] Lodging tax revenues were deposited into the General Fund in FY 2010 and FY 2011; they are deposited into the Distributive School Account beginning in FY 2012 and are scheduled to be deposited into the Supplemental School Account in FY 2018 and thereafter.

FY 2017 Year-to-Date Tax Credit Summary

Year-to-Date	Revenues impacted by Tax Credits							Sub-totals by Tax Credit Type		
	Modified Business Tax				Insurance	Gaming				
	Non-Financial	Financial	Mining	Total	Premium Tax	Percentage Fees	Redeemed	Estimate	Remaining	
Tax Credit type										
Film	\$ -	\$ -	\$ -	\$ -	\$ -	\$ 3,908,259	\$ 3,908,259	\$ 3,908,259	\$ -	
Economic Development	\$ -	\$ -	\$ -	\$ -	\$ -	\$ 25,626,864	\$ 25,626,864	\$ 36,475,946	\$ 10,849,082	
Catalyst Account	\$ -	\$ -	\$ -	\$ -	\$ -	\$ -	\$ -	\$ 355,000	\$ 355,000	
Education Choice	\$ 2,931,666	\$ -	\$ -	\$ 2,931,666			\$ 2,931,666	\$ 6,098,460	\$ 3,166,794	
College Savings	\$ -	\$ -	\$ -	\$ -			\$ -	\$ 69,000	\$ 69,000	
Commerce Tax	\$ 34,592,298	\$ 356,008	\$ 591,778	\$ 35,540,085			\$ 35,540,085	\$ 76,227,000	\$ 40,686,915	
New Markets					\$ 7,910,352		\$ 7,910,352	\$ 24,000,000	\$ 16,089,648	
Sub-totals by Revenue Source										
Redeemed	\$ 37,523,964	\$ 356,008	\$ 591,778	\$ 38,471,751	\$ 7,910,352	\$ 29,535,123	\$ 75,917,226	\$ 147,133,665	\$ 71,216,439	
Revenue Source										
Gross	\$ 287,453,732	\$ 13,753,342	\$ 10,931,704	\$ 312,138,777	\$ 190,407,837	\$ 622,291,767				
Credits	\$ 37,523,964	\$ 356,008	\$ 591,778	\$ 38,471,751	\$ 7,910,352	\$ 29,535,123				
Collections Net of Credits	\$ 249,929,767	\$ 13,397,333	\$ 10,339,926	\$ 273,667,026	\$ 182,497,485	\$ 592,756,644				

Transferable Film Tax Credit Program: The 2013 Regular Session of the State Legislature authorized a four-year pilot program of transferable tax credits issued for qualified film productions completed in the State that may be used against the modified business tax, insurance premium tax and/or the gaming percentage fee tax. The legislation authorized up to \$20 million per fiscal year for a total of \$80 million. However, the provisions of the pilot program were amended in the 2014 Special Session of the State Legislature, reducing the total amount of credits that may be approved to \$10 million. The 2015 Regular Session of the State Legislature made the transferable film tax credit program permanent but limited the amount of transferable tax credits to the amount appropriated by the State Legislature for that purpose for that fiscal year. The 2015 Regular Session of the State Legislature did not appropriate additional funding for this program for either FY 2016 or FY 2017. The credit estimate for FY 2017 reflects unused credits from previous fiscal years.

Economic Development Transferable Tax Credits Program: The 2014 Special Session of the State Legislature required the Governor's Office of Economic Development (GOED) to issue transferable tax credits for certain qualifying projects that may be used against the modified business tax, insurance premium tax and/or the gaming percentage fee tax. A qualifying project is required to be located within the geographical borders of the State of Nevada, make a total new capital investment in the State of at least \$3.5 billion during the 10-year period immediately following approval of the application, and employ Nevada residents in at least half of the project's construction jobs and operational jobs. The amount of transferable tax credits is equal to \$12,500 for each qualified employee employed by the participants in the project (to a maximum of 6,000 employees), plus 5% of the first \$1 billion and 2.8% of the next \$2.5 billion in new capital investment in the State made collectively by the participants in the qualifying project. The amount of tax credits approved by GOED may not exceed \$45 million per fiscal year (although any unissued credits may be issued in a subsequent fiscal year), and GOED may not issue total tax credits in excess of \$195 million, reflecting the maximum amounts of credits approved for the Tesla project. The program will expire on June 30, 2036. S.B. 1 of the 29th Special Session (2015), (GOED) authorizes the Governor's Office of Economic Development to issue transferrable tax credits that may be used against the Modified Business Tax, Insurance Premium Tax, and the Gaming Percentage Fee Tax for certain qualified projects. The amount of transferrable tax credits are equal to \$9,500 for each qualified employee employed by the participants in the project, to a maximum of 4,000 employees. The amount of credits approved by GOED may not exceed \$7.6 million per fiscal year (though any unissued credits may be issued in subsequent fiscal years), and GOED may not issue total credits in excess of \$38 million, reflecting the maximum amounts of credits approved for the Faraday project. The May 2017 Economic Forum estimated that the total amount of transferable tax credits under this program used in FY 2017 is \$36,475,946, \$31,087,500 in FY 2018, and \$44,600,000 in FY 2019.

Catalyst Account Transferable Tax Credit Program: The 2015 Regular Session of the State Legislature authorized the Governor's Office of Economic Development (GOED) to approve transferable tax credits that may be used against the modified business tax, insurance premium tax and gaming percentage fee tax to new or expanding businesses to promote the economic development of Nevada. The total amount of transferable tax credits that may be issued is \$500,000 in FY 2016, \$2 million in FY 2017 and \$5 million in each fiscal year thereafter. A.B. 1 of the 29th Special Session (2015) reduced the total amount of transferrable tax credits that may be issued by GOED to zero in FY 2016, \$1 million in FY 2017, \$2 million per year in FY 2018 and FY 2019, and \$3 million in FY 2020. For FY 2021 and future fiscal years, the amount of credits that may be issued by GOED remains at \$5 million per year. Based on information received from GOED, the May 2017 Economic Forum estimated that total amount of credits under this program used in FY 2017 is \$355,000.

Nevada Educational Choice Scholarship Tax Credit Program: The 2015 Regular Session of the State Legislature authorized a taxpayer who makes a donation of money to certain scholarship organizations to receive a dollar-for-dollar credit against the taxpayer's liability for the modified business tax. The total amount of tax credits that may be approved by the Department of Taxation for this program is \$5 million in FY 2016, \$5.5 million in FY 2017 and 110% of the total amount of credits authorized in the previous year for all subsequent fiscal years. The credit estimate for FY 2017 reflects unused credits from the previous fiscal year.

College Savings Plan Employer Matching Employee Contribution Tax Credit Program: The 2015 Regular Session of the State Legislature authorized a tax credit against the modified business tax to certain employers who match the contributions of an employee to one of the college savings plans offered through the Nevada Higher Education Prepaid Tuition Program and/or the Nevada College Savings Program. The provisions relating to the Nevada College Savings Program are effective January 1, 2016 and provisions relating to the Higher Education Prepaid Tuition Program are effective July 1, 2016. The amount of the tax credit is equal to 25% of the matching contribution, not to exceed \$500 per contributing employee per year, and any unused credits may be carried forward for up to 5 years. Implementation of this program is delayed by one year. Based on enrollment and contribution estimates for the college savings made by the State's Treasurer's Office, the credits are projected to be \$69,000 in FY 2017, \$138,000 in FY 2018, and \$207,000 in FY 2019.

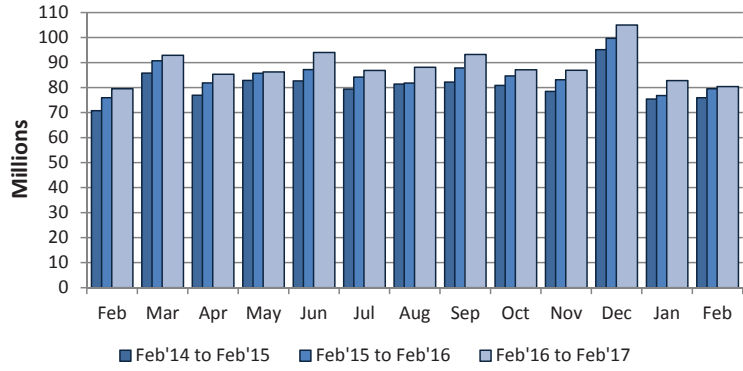
Commerce Tax Credit: The 2015 Regular Session of the State Legislature enacted a levy on the gross revenue of a business which is earned in the State of Nevada effective July 1, 2015. The first \$4,000,000 per year in gross revenues earned in the State of Nevada is exempt from the tax which is known as the commerce tax. Businesses which are required to pay the commerce tax are entitled to a credit of 50% of their commerce tax liability against their modified business tax. Businesses are required to use the credit in the same fiscal year as the commerce tax is paid. The May 2017 Economic Forum estimated that in FY 2017, the Commerce Tax credit is \$76,227,000, \$88,763,000 in FY 2018, and \$93,023,000 in FY 2019.

Nevada New Markets Jobs Act Tax Credit Program: The 2013 Regular Session of the State Legislature authorized the Nevada New Market Jobs Act which allows insurance companies to receive a credit against the insurance premium tax in exchange for a qualified equity investment in one or more community development organizations, primarily for local or minority-owned entities in under-served zones in the State. The State Department of Business and Industry may certify up to \$200 million in qualified equity investments. In exchange for making the qualified equity investment, insurance companies are entitled to receive a credit against the insurance premium tax in an amount equal to 58% of the total qualified equity investment certified by the Department of Business and Industry. The credits may be taken in increments beginning on the second anniversary date of the original investment, as follows:

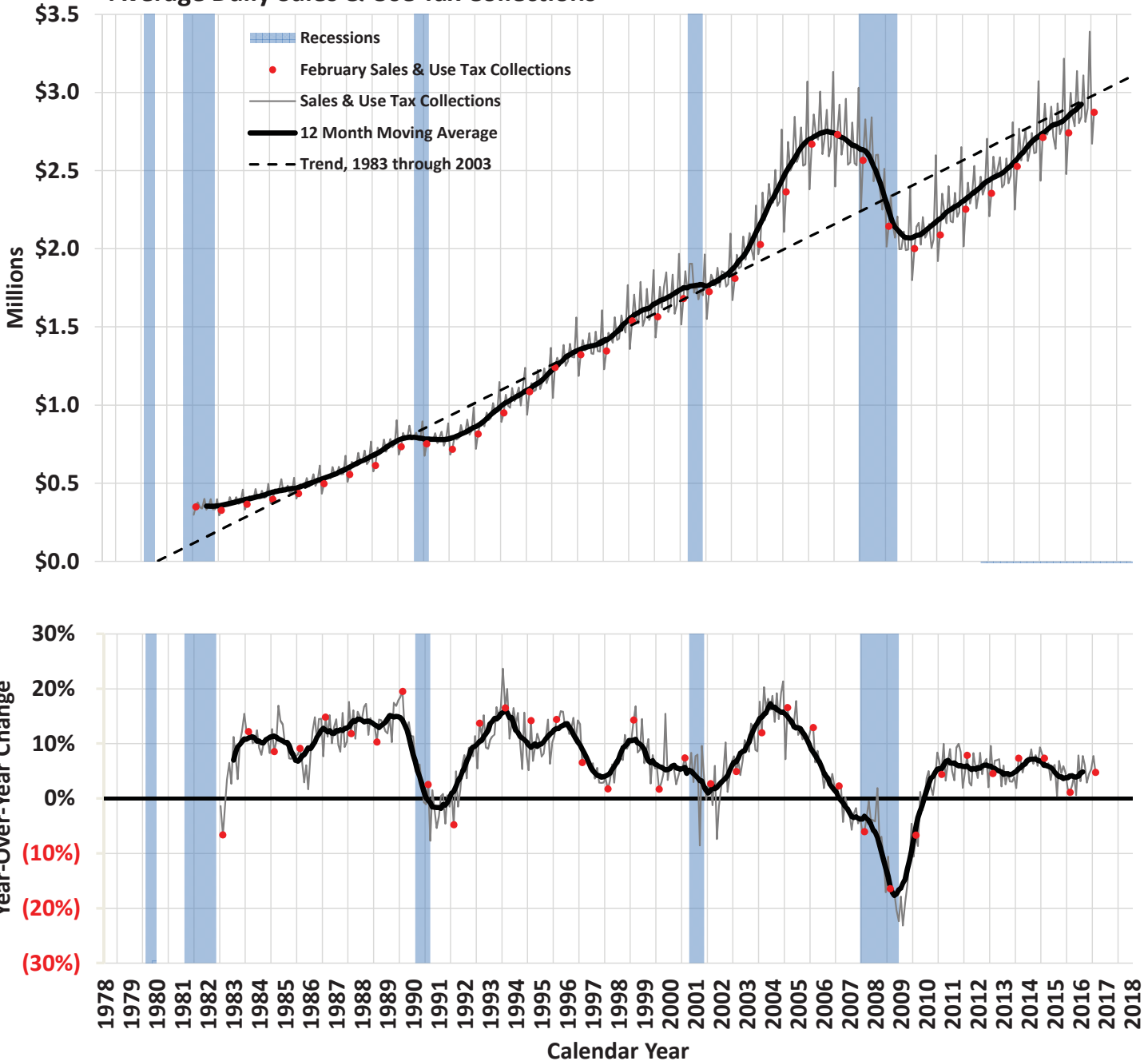
- 2 years after the investment is made: 12 percent of the qualified investment
- 3 years after the investment is made: 12 percent of the qualified investment
- 4 years after the investment is made: 12 percent of the qualified investment
- 5 years after the investment is made: 11 percent of the qualified investment
- 6 years after the investment is made: 11 percent of the qualified investment

2% General Fund Sales & Use Tax Collections

	Total	Year/Year Change	
	(millions)	(millions)	%
February 2016	\$79.5	\$3.6	4.7
March 2016	92.9	2.2	2.4
April 2016	85.3	3.4	4.2
May 2016	86.3	0.5	0.6
June 2016	94.1	6.8	7.8
July 2016	86.9	2.7	3.2
August 2016	88.1	6.3	7.7
September 2016	93.3	5.4	6.1
October 2016	87.2	2.4	2.9
November 2016	86.9	3.8	4.6
December 2016	105.1	5.3	5.4
January 2017	82.8	6.0	7.8
February 2017	80.5	0.9	1.1



Average Daily Sales & Use Tax Collections



*Reported values exclude amounts collected under state tax amnesty programs.

Statewide Taxable Sales & Use by Industry

	Food Services & Drinking Places (722)				Motor Vehicle & Parts Dealers (441)				Miscellaneous Retail & Non-Retail Stores (442, 443, 447, 451, 453, 454)				Wholesale Trade (423-425)			
	Year/Year Change		Share of Total		Year/Year Change		Share of Total		Year/Year Change		Share of Total		Year/Year Change		Share of Total	
	(millions)	%	%	Rank	(millions)	%	%	Rank	(millions)	%	%	Rank	(millions)	%	%	Rank
February 2016	\$56.8	6.6	22.9	1	\$47.5	10.0	12.9	2	\$0.6	0.2	10.4	3	\$17.0	5.2	8.5	5
March 2016	23.2	2.2	22.5	1	23.4	4.3	12.2	2	21.5	4.4	10.9	3	6.2	1.5	9.0	5
April 2016	65.2	6.7	23.8	1	51.2	10.3	12.5	2	57.2	13.3	11.2	3	8.1	2.2	8.6	4
May 2016	(22.0)	(2.1)	23.7	1	48.6	9.4	12.9	2	18.9	4.3	10.4	3	7.9	2.2	8.2	5
June 2016	62.5	6.3	21.5	1	29.3	5.5	11.5	2	67.3	15.3	10.4	3	38.5	9.9	8.8	4
July 2016	54.8	5.6	23.2	1	27.7	5.1	12.9	2	26.2	6.1	10.2	3	(4.0)	(1.1)	8.1	4
August 2016	63.0	6.6	22.1	1	62.0	11.7	12.8	2	35.4	8.3	10.0	4	191.5	55.1	11.7	3
September 2016	66.8	6.8	22.1	1	44.1	8.5	11.9	2	49.4	10.9	10.6	3	24.8	6.3	8.8	4
October 2016	4.3	0.4	23.0	1	27.3	5.6	11.6	2	(7.4)	(1.5)	10.7	3	8.4	2.2	8.6	4
November 2016	52.7	6.0	21.0	1	19.4	4.1	11.1	3	30.9	6.3	11.7	2	44.7	13.3	8.6	5
December 2016	46.5	5.1	17.5	1	57.6	11.6	10.2	4	28.3	4.3	12.7	2	49.0	11.2	8.9	5
January 2017	44.2	4.6	23.5	1	36.5	8.1	11.4	2	52.1	12.7	10.8	3	88.2	28.2	9.4	4
February 2017	13.9	1.5	22.2	1	(8.6)	(1.7)	12.1	2	21.2	5.1	10.4	4	150.0	43.7	11.7	3

	General Merchandise Stores (452)				Clothing & Clothing Accessories Stores (448)				Information, Financial, Insurance, Real Estate, Renting & Leasing (511-533)				Manufacturing* (311-339)			
	Year/Year Change		Share of Total		Year/Year Change		Share of Total		Year/Year Change		Share of Total		Year/Year Change		Share of Total	
	(millions)	%	%	Rank	(millions)	%	%	Rank	(millions)	%	%	Rank	(millions)	%	%	Rank
February 2016	(\$6.2)	(1.7)	8.7	4	(\$12.0)	(4.2)	6.8	6	\$44.4	20.5	6.5	7	\$2.0	1.1	4.6	8
March 2016	20.1	4.6	9.8	4	(20.2)	(6.2)	6.5	6	15.0	6.4	5.3	7	14.9	6.4	5.3	8
April 2016	2.3	0.7	8.0	5	(14.2)	(4.9)	6.4	6	(10.7)	(4.7)	4.9	8	(11.1)	(5.2)	4.6	9
May 2016	0.4	0.1	8.2	4	(37.4)	(11.0)	6.8	6	19.0	7.7	6.0	7	(9.6)	(4.4)	4.8	8
June 2016	14.4	3.8	8.1	5	(1.2)	(0.4)	6.5	6	29.4	10.7	6.2	7	3.3	1.3	5.2	8
July 2016	6.3	1.8	8.0	5	(9.0)	(3.0)	6.6	7	36.9	14.2	6.7	6	20.1	9.7	5.1	8
August 2016	4.8	1.3	8.0	5	(9.3)	(2.9)	6.6	6	18.2	7.4	5.7	7	41.2	19.3	5.5	8
September 2016	18.7	5.2	8.0	5	11.8	3.7	6.9	6	37.4	14.9	6.0	7	(0.9)	(0.4)	5.2	8
October 2016	10.2	2.9	8.2	5	0.8	0.3	6.8	6	16.3	6.4	6.1	7	18.6	8.2	5.5	8
November 2016	(5.8)	(1.3)	9.7	4	(5.9)	(1.7)	7.7	6	12.2	5.2	5.6	7	20.0	10.1	5.1	8
December 2016	16.4	2.9	10.7	3	(7.4)	(1.6)	8.1	6	74.2	24.8	6.9	7	8.0	2.6	5.8	8
January 2017	9.0	2.9	7.6	5	3.9	1.5	6.0	7	73.3	30.0	7.4	6	20.5	10.9	4.9	8
February 2017	(16.2)	(4.6)	7.9	5	(19.1)	(6.9)	6.1	6	(5.6)	(2.1)	6.0	7	23.0	12.3	5.0	9

	Building Material & Garden Equipment & Supplies (444)				Food & Beverage Stores (445)				Construction (236-238)				Health & Personal Care Stores (446)			
	Year/Year Change		Share of Total		Year/Year Change		Share of Total		Year/Year Change		Share of Total		Year/Year Change		Share of Total	
	(millions)	%	%	Rank	(millions)	%	%	Rank	(millions)	%	%	Rank	(millions)	%	%	Rank
February 2016	\$8.7	5.8	3.9	9	\$2.0	1.5	3.3	10	(\$8.1)	(10.0)	1.8	12	\$4.1	5.6	1.9	11
March 2016	5.1	2.7	4.2	9	11.4	8.1	3.3	10	(0.7)	(0.8)	1.9	11	2.8	3.2	1.9	12
April 2016	12.4	6.3	4.8	8	4.6	3.4	3.2	10	4.2	5.0	2.0	11	0.3	0.4	1.8	12
May 2016	20.0	11.0	4.6	9	6.5	4.5	3.5	10	0.4	0.5	2.0	11	3.5	4.5	1.9	12
June 2016	23.0	11.5	4.6	9	3.0	2.1	3.0	10	(7.5)	(6.9)	2.1	12	8.1	9.6	1.9	13
July 2016	16.1	8.4	4.6	9	4.9	3.3	3.4	10	(6.0)	(6.1)	2.1	11	7.6	9.9	1.9	12
August 2016	20.6	12.4	4.0	9	0.6	0.5	3.1	10	13.7	15.4	2.2	11	4.8	6.3	1.8	12
September 2016	26.9	15.3	4.3	9	5.3	3.8	3.1	10	(17.9)	(14.8)	2.2	12	11.0	13.8	1.9	13
October 2016	19.9	11.0	4.5	9	(5.7)	(3.9)	3.2	10	(7.8)	(7.5)	2.2	11	6.1	7.9	1.9	12
November 2016	21.2	12.6	4.3	9	7.0	5.2	3.2	10	22.3	23.7	2.6	11	8.3	10.7	1.9	12
December 2016	32.9	20.1	3.6	10	2.2	1.1	3.6	9	(21.4)	(16.6)	2.0	12	10.0	9.7	2.1	11
January 2017	21.7	14.3	4.1	9	8.1	6.3	3.2	10	22.6	30.3	2.3	11	4.8	6.3	1.9	12
February 2017	8.2	5.2	4.0	10	1.4	1.1	3.2	11	13.4	18.5	2.0	12	2.0	2.6	1.9	13

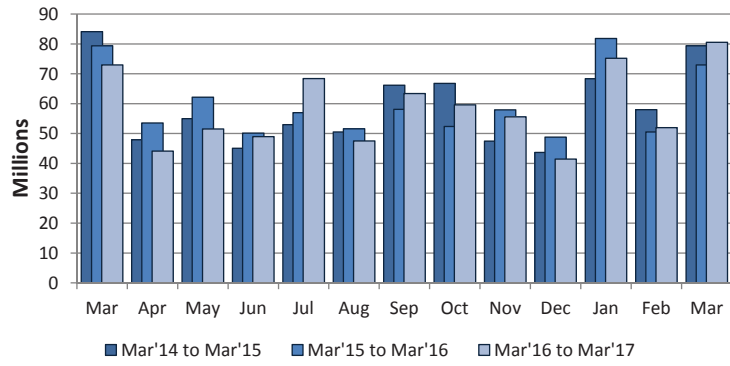
	Natural Resources & Utilities* (111-221)				Arts, Entertainment, Recreation & Accommodation (710-721)				Transportation & Warehousing (481-493)				Other Services**, Public Administration & Miscellaneous (541-624, 811-999)			
	Year/Year Change		Share of Total		Year/Year Change		Share of Total		Year/Year Change		Share of Total		Year/Year Change		Share of Total	
	(millions)	%	%	Rank	(millions)	%	%	Rank	(millions)	%	%	Rank	(millions)	%	%	Rank
February 2016	(\$14.4)	(31.0)	0.8	13	\$4.3	17.0	0.7	14	(\$2.6)	(14.2)	0.4	15	\$50.1	28.2	5.7	8
March 2016	(5.2)	(10.9)	0.9	14	10.4	30.8	0.9	13	(2.2)	(10.8)	0.4	15	15.6	6.9	5.2	9
April 2016	(8.7)	(15.7)	1.1	13	9.3	32.3	0.9	14	(0.9)	(5.0)	0.4	15	72.4	40.7	5.7	7
May 2016	(8.7)	(16.5)	1.0	13	1.8	5.1	0.8	14	1.9	10.4	0.5	15	17.5	9.3	4.7	9
June 2016	68.9	96.0	2.9	11	7.7	22.7	0.9	14	2.9	16.0	0.4	15	77.5	36.4	6.0	8
July 2016	(73.7)	(49.0)	1.7	13	7.2	19.7	1.0	14	0.4	2.6	0.4	15	12.8	7.5	4.1	10
August 2016	(12.7)	(18.1)	1.2	13	4.7	14.7	0.8	14	(8.7)	(32.4)	0.4	15	12.6	7.3	4.0	10
September 2016	41.3	61.4	2.3	11	16.0	47.1	1.1	14	0.2	0.9	0.5	15	(25.3)	(9.2)	5.2	8
October 2016	(2.4)	(3.7)	1.4	13	5.1	14.9	0.9	14	9.5	40.1	0.7	15	28.0	15.0	4.8	9
November 2016	0.7	1.1	1.3	13	9.5	30.4	0.9	14	(9.5)	(30.4)	0.5	15	8.5	4.1	4.8	9
December 2016	(21.2)	(23.1)	1.3	13	12.1	37.3	0.8	14	0.0	0.1	0.4	15	32.0	12.1	5.5	9
January 2017	10.5	28.3	1.1	13	5.5	18.0	0.9	14	0.8	5.4	0.4	15	49.1	27.7	5.3	8
February 2017	(2.5)	(7.9)	0.7	15	6.0	20.5	0.8	14	2.8	18.4	0.4	16	3.2	1.4	5.5	8

* Statistically significant outliers in most recent month's data

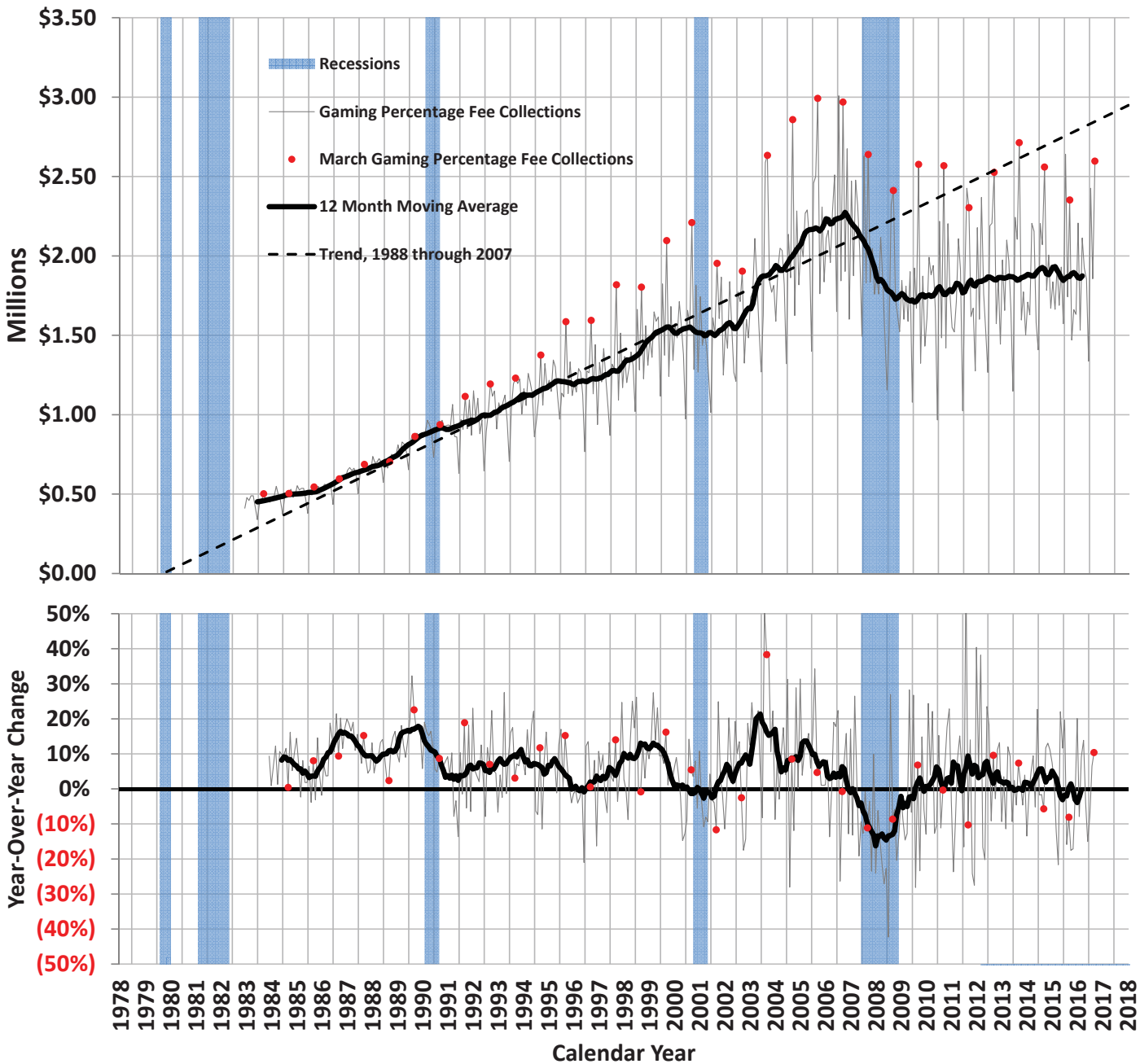
** Other Services includes Professional, Management, Administration, Education and Health Services.

Gaming Percentage Fees Collections

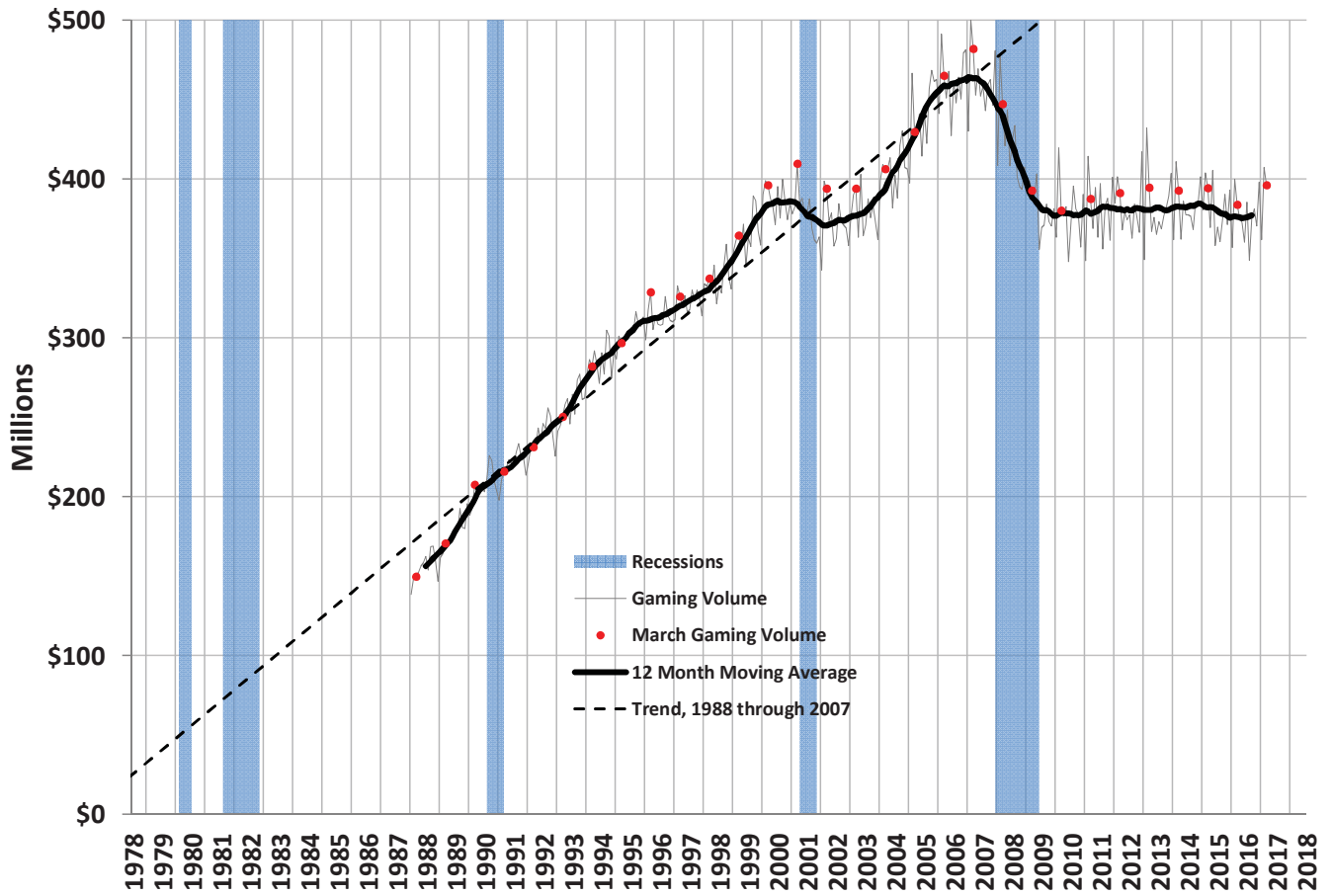
Business Period	Total (millions)	Year/Year Change	
		(millions)	%
March 2016	\$72.9	(\$6.4)	(8.1)
April 2016	44.1	(9.4)	(17.5)
May 2016	51.5	(10.6)	(17.1)
June 2016	49.0	(1.1)	(2.3)
July 2016	68.4	11.5	20.1
August 2016	47.5	(4.1)	(7.9)
September 2016	63.4	5.3	9.1
October 2016	59.6	7.3	13.9
November 2016	55.6	(2.3)	(4.0)
December 2016	41.5	(7.3)	(15.0)
January 2017	75.2	(6.6)	(8.1)
February 2017	52.0	1.4	2.9
March 2017	80.5	7.6	10.4



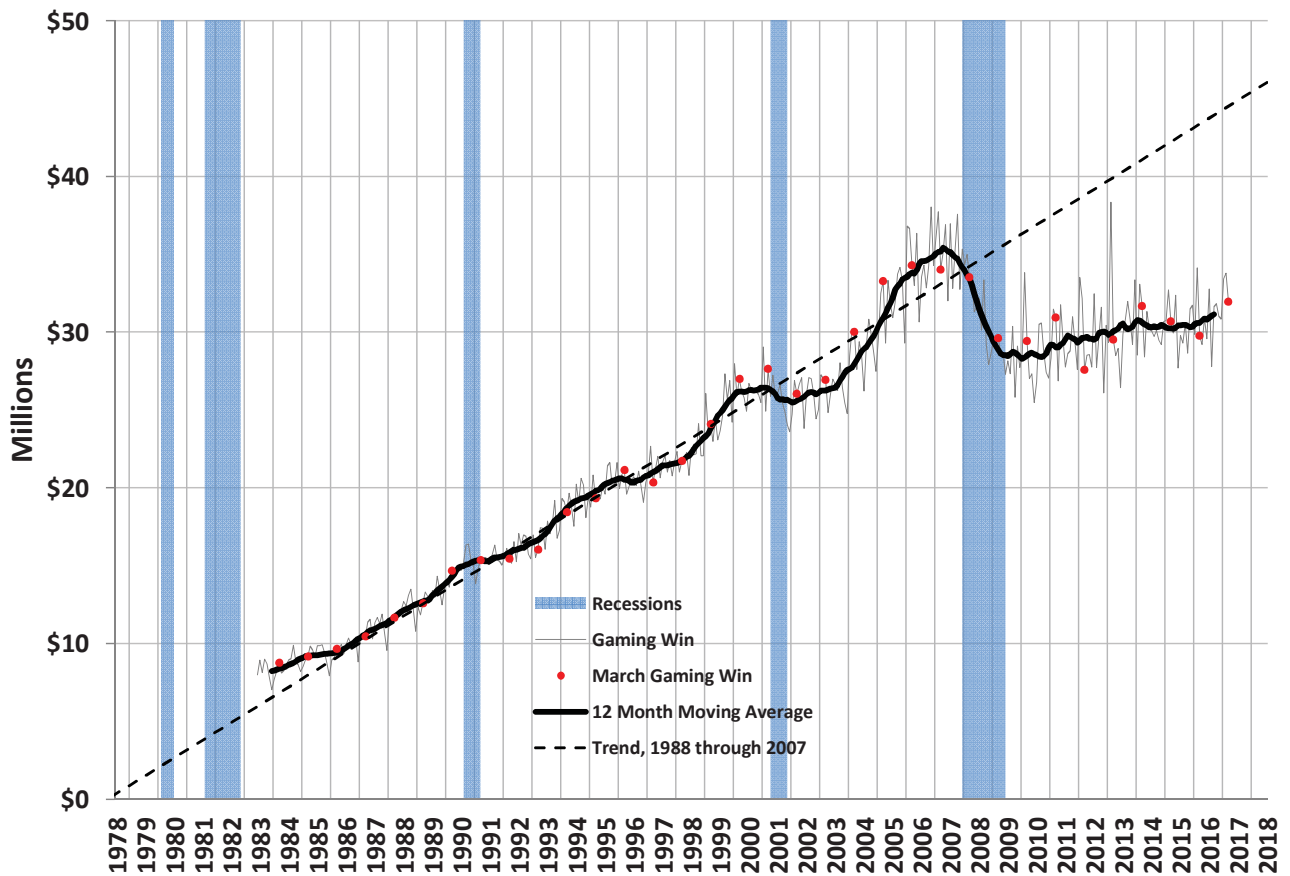
Average Daily Gaming Percentage Fee Collections



Average Daily Gaming Volume

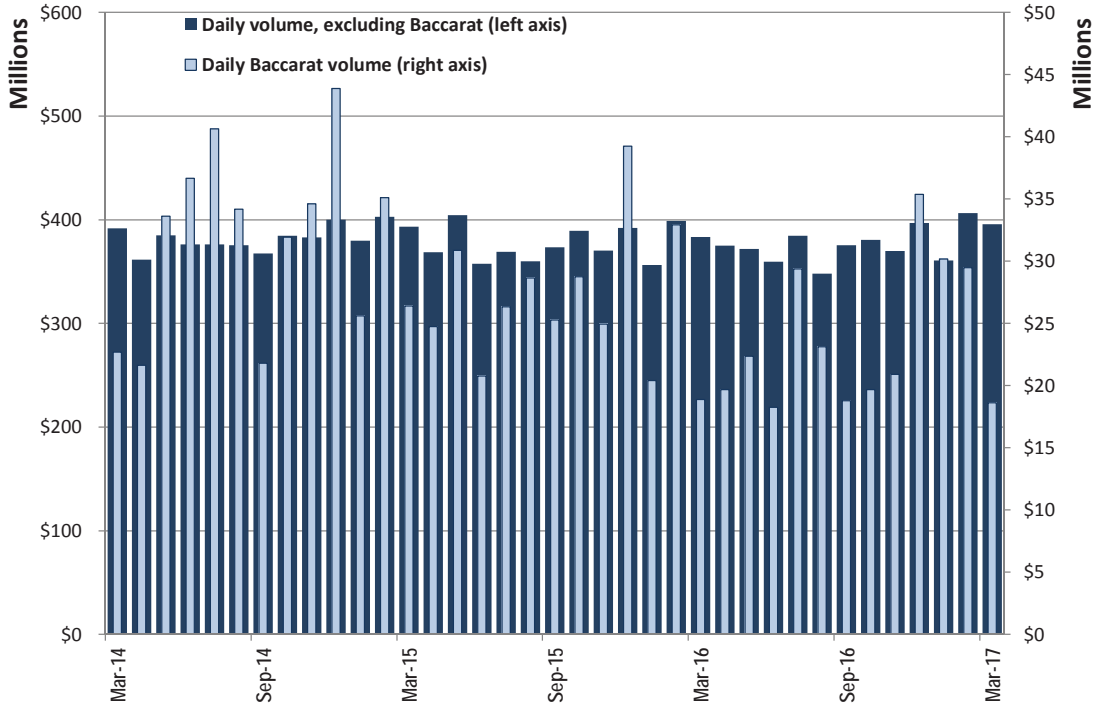


Average Daily Gaming Win

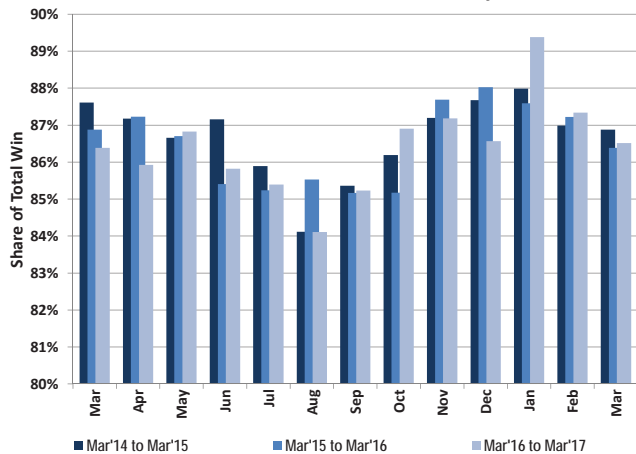


Statewide Gaming Activity										
Date	Slots		Games Excluding Baccarat		Baccarat		Tables	Total	Taxable	Pct. Fee due
	Coin-In	Win	Volume	Win	Volume	Win	Win	Win	Gross Revenue	after EFA
	Yr/Yr Pct. Chg.	Yr/Yr Pct. Chg.	Yr/Yr Pct. Chg.	Yr/Yr Pct. Chg.	Yr/Yr Pct. Chg.	Yr/Yr Pct. Chg.	Yr/Yr Pct. Chg.	Yr/Yr Pct. Chg.	Yr/Yr Pct. Chg.	Yr/Yr Pct. Chg.
Mar-15	(0.1)	3.5	(2.4)	(7.1)	16.3	(33.1)	(6.7)	(3.2)	2.6	(3.1)
Apr-15	1.3	6.1	0.5	3.4	14.4	5.6	(3.3)	5.4	6.0	23.4
May-15	3.5	8.0	20.3	21.8	(8.2)	(36.4)	0.6	3.3	7.8	14.6
Jun-15	(0.7)	(1.0)	(2.4)	1.8	(43.3)	(56.0)	4.5	(8.4)	9.0	20.4
Jul-15	2.6	5.5	(1.1)	(4.3)	(35.2)	(23.1)	0.6	(0.9)	4.9	4.0
Aug-15	(1.9)	10.0	(9.0)	(10.0)	(16.2)	(25.1)	(5.5)	(1.4)	(2.4)	(11.2)
Sep-15	1.7	(1.8)	(3.7)	2.6	15.8	21.9	1.3	1.5	(3.2)	(12.9)
Oct-15	2.0	(1.4)	3.5	1.8	(10.0)	(21.8)	(0.2)	(2.9)	(7.8)	(17.6)
Nov-15	(0.3)	13.2	(3.8)	8.2	(27.9)	(14.3)	(3.9)	7.8	14.4	33.5
Dec-15	0.6	1.2	(8.2)	(1.5)	(10.6)	18.9	1.4	3.4	7.0	13.3
Jan-16	(2.9)	3.2	(14.8)	(3.8)	(20.3)	(26.1)	(2.9)	(2.9)	3.9	20.0
Feb-16	2.6	7.9	5.4	12.5	(2.8)	0.9	5.4	8.1	5.4	(2.0)
Mar-16	(0.4)	(2.9)	(2.4)	(3.3)	(28.5)	(3.5)	(0.0)	(3.0)	(4.3)	(8.5)
Apr-16	4.0	(5.7)	(0.8)	1.4	(20.4)	9.9	0.9	(2.4)	(5.1)	(20.7)
May-16	(3.5)	4.7	(18.8)	(18.4)	(27.5)	(18.9)	(13.9)	(4.5)	3.1	1.1
Jun-16	2.8	6.9	(5.5)	(0.4)	(12.1)	31.6	1.9	6.8	(0.5)	4.4
Jul-16	3.7	0.1	3.7	21.6	11.6	44.5	7.6	10.0	7.5	19.9
Aug-16	(1.8)	3.3	(2.9)	(6.3)	(19.3)	(42.0)	(3.2)	(5.2)	5.8	7.9
Sep-16	2.5	2.4	1.9	11.4	(25.7)	(7.8)	1.5	3.5	2.8	6.3
Oct-16	0.7	10.4	(3.9)	13.7	(31.6)	10.2	(0.2)	11.1	8.6	9.0
Nov-16	2.1	1.5	(4.1)	1.1	(16.3)	(22.8)	(0.6)	(1.5)	2.2	0.4
Dec-16	2.6	(3.4)	1.9	(0.9)	(9.9)	(3.3)	0.1	(2.7)	(1.6)	(8.1)
Jan-17	(1.3)	9.6	(2.3)	0.1	47.9	55.1	(5.3)	12.0	(1.7)	(7.9)
Feb-17	(0.2)	(4.6)	(2.4)	2.9	(13.5)	(19.4)	(1.6)	(4.5)	2.7	3.1
Mar-17	4.1	6.3	0.5	16.2	(1.3)	(11.0)	(0.7)	7.4	7.0	12.4

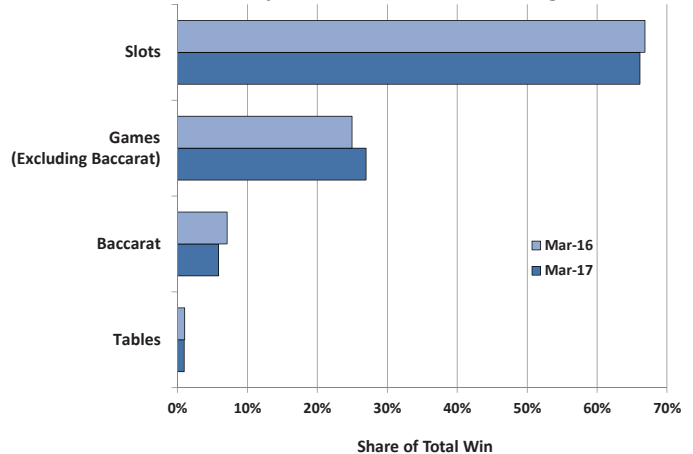
Statewide Average Daily Gaming Volume



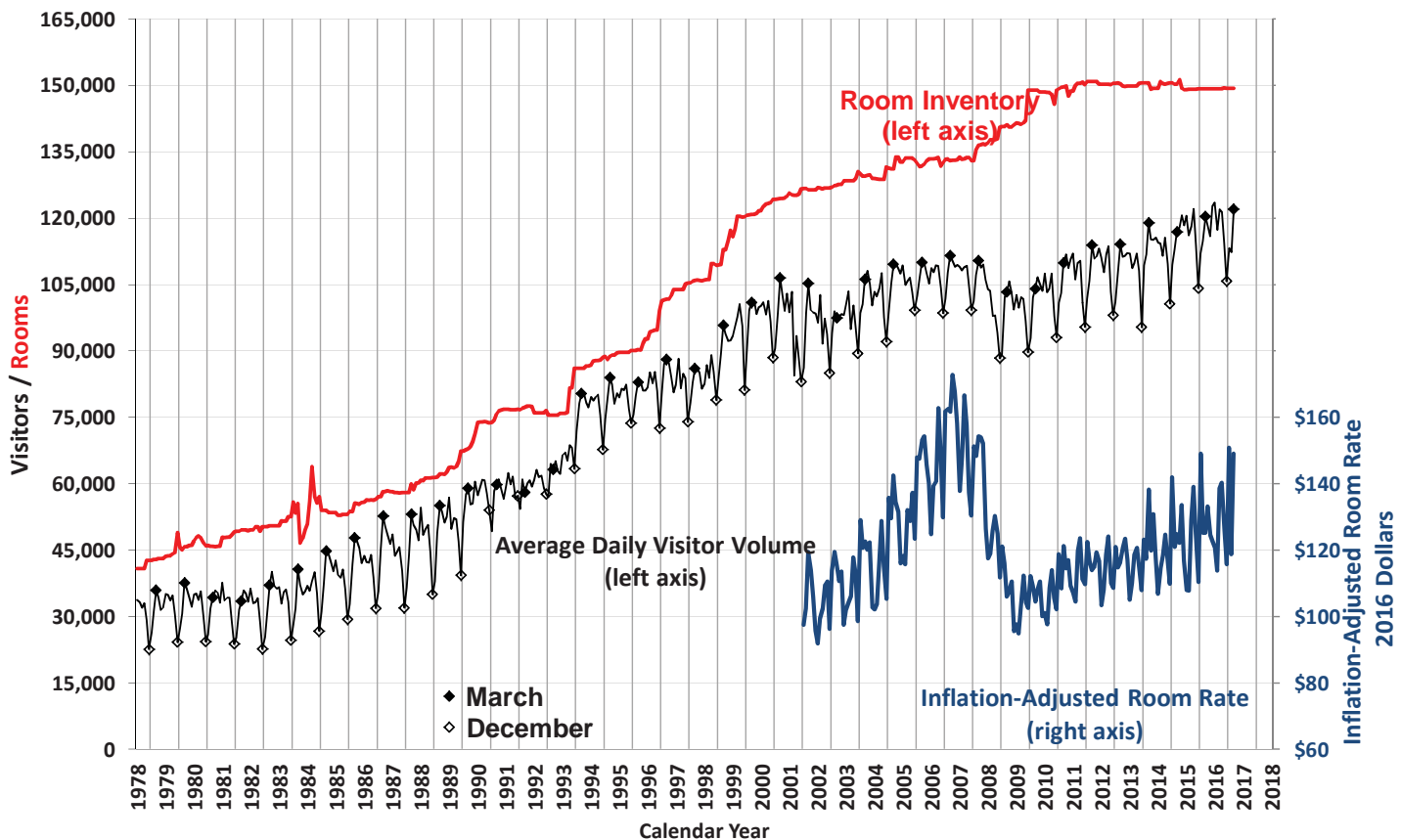
Share of Statewide Win from Clark County



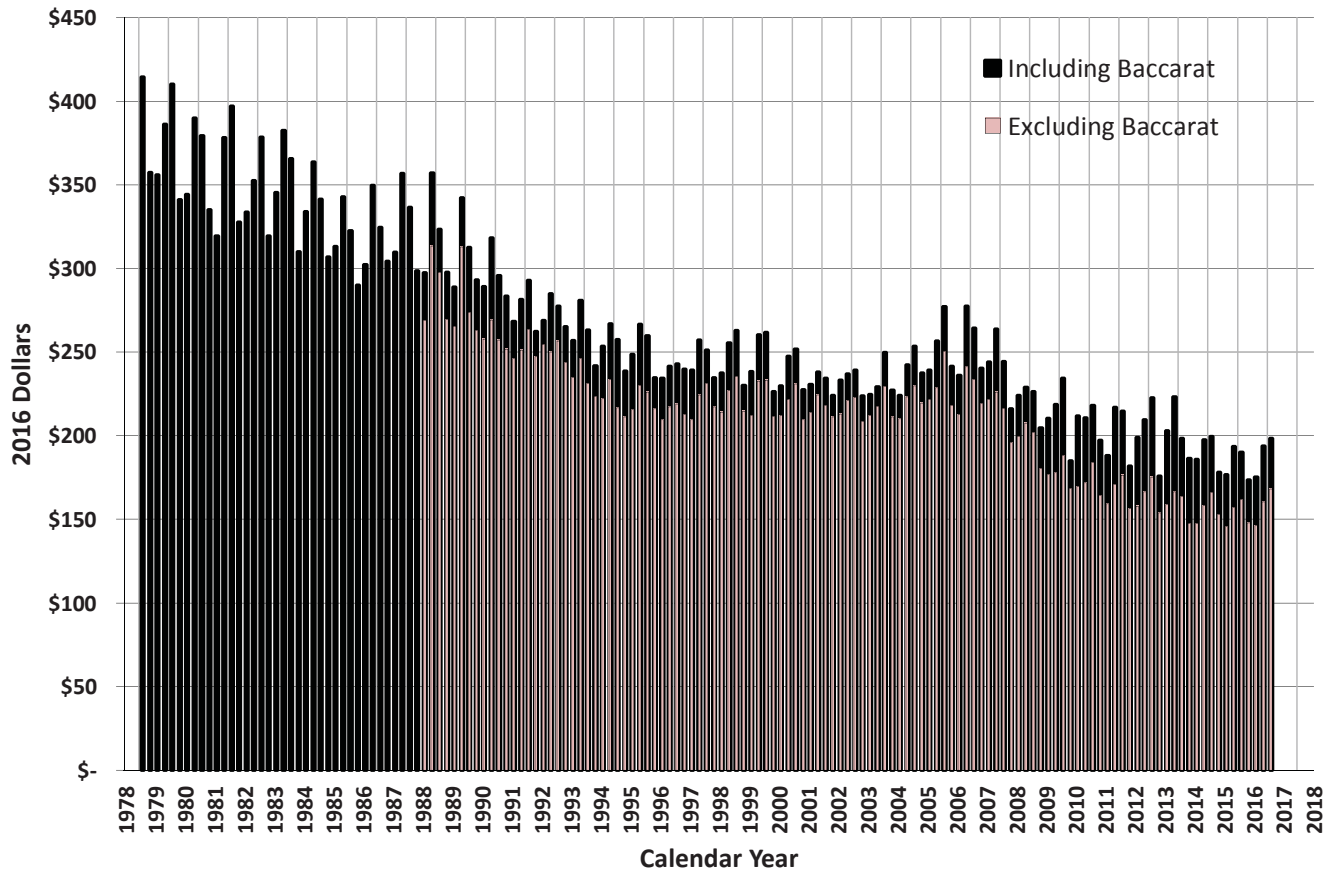
Components of Statewide Gaming Win



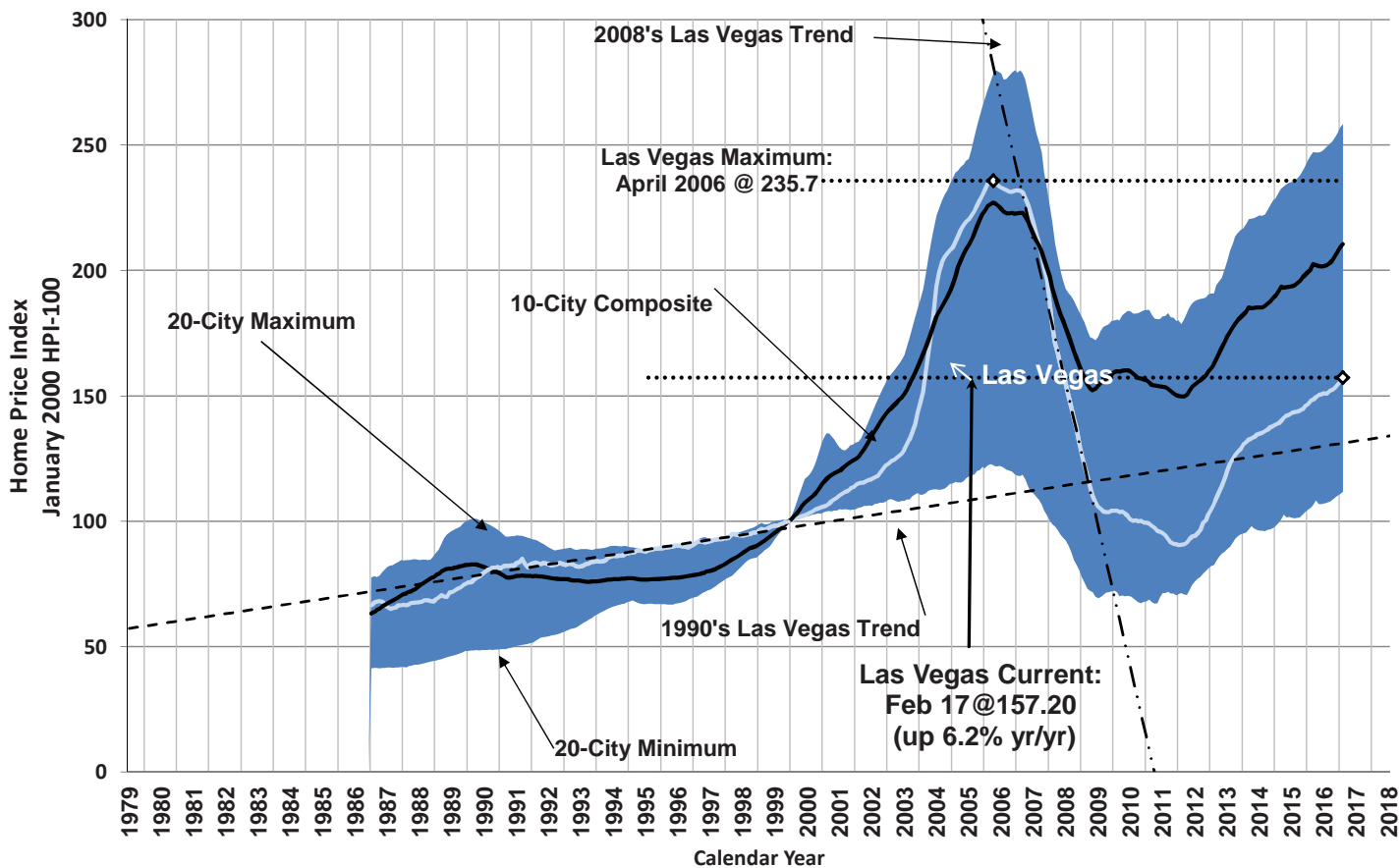
Las Vegas Visitors vs. Rooms



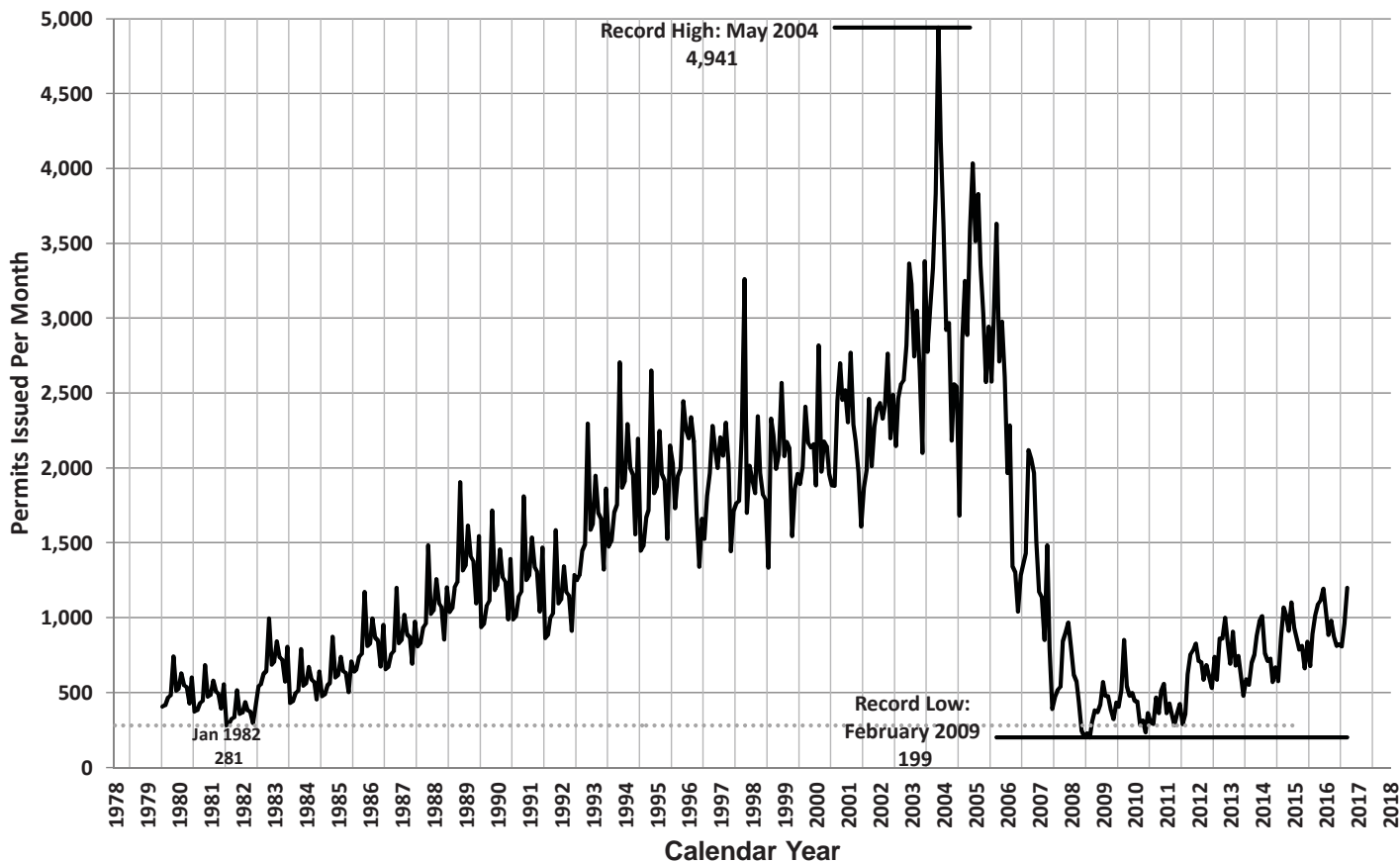
Average Las Vegas Gaming Win per Visitor (Inflation-Adjusted)



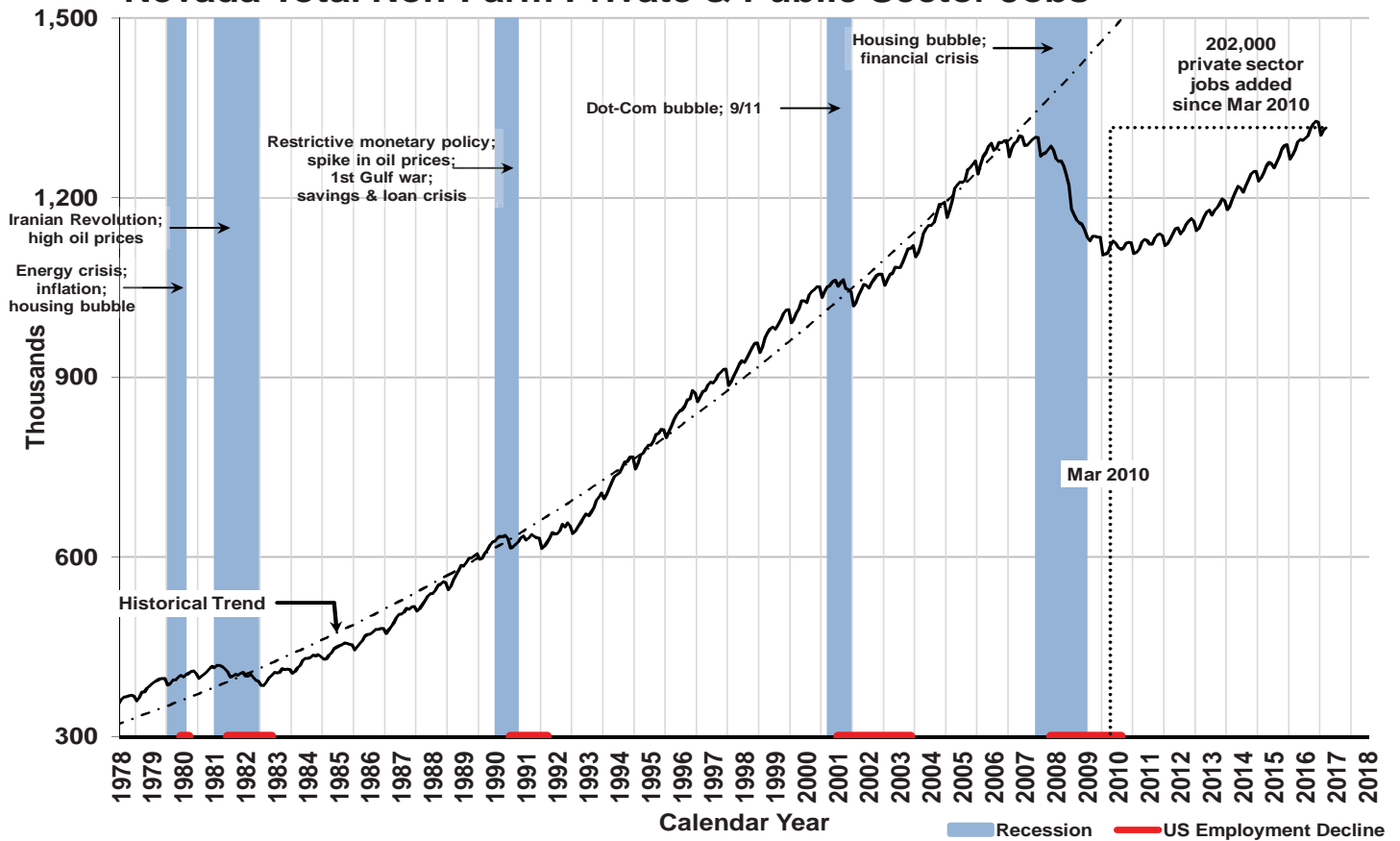
Case-Shiller Seasonally Adjusted Home Price Index



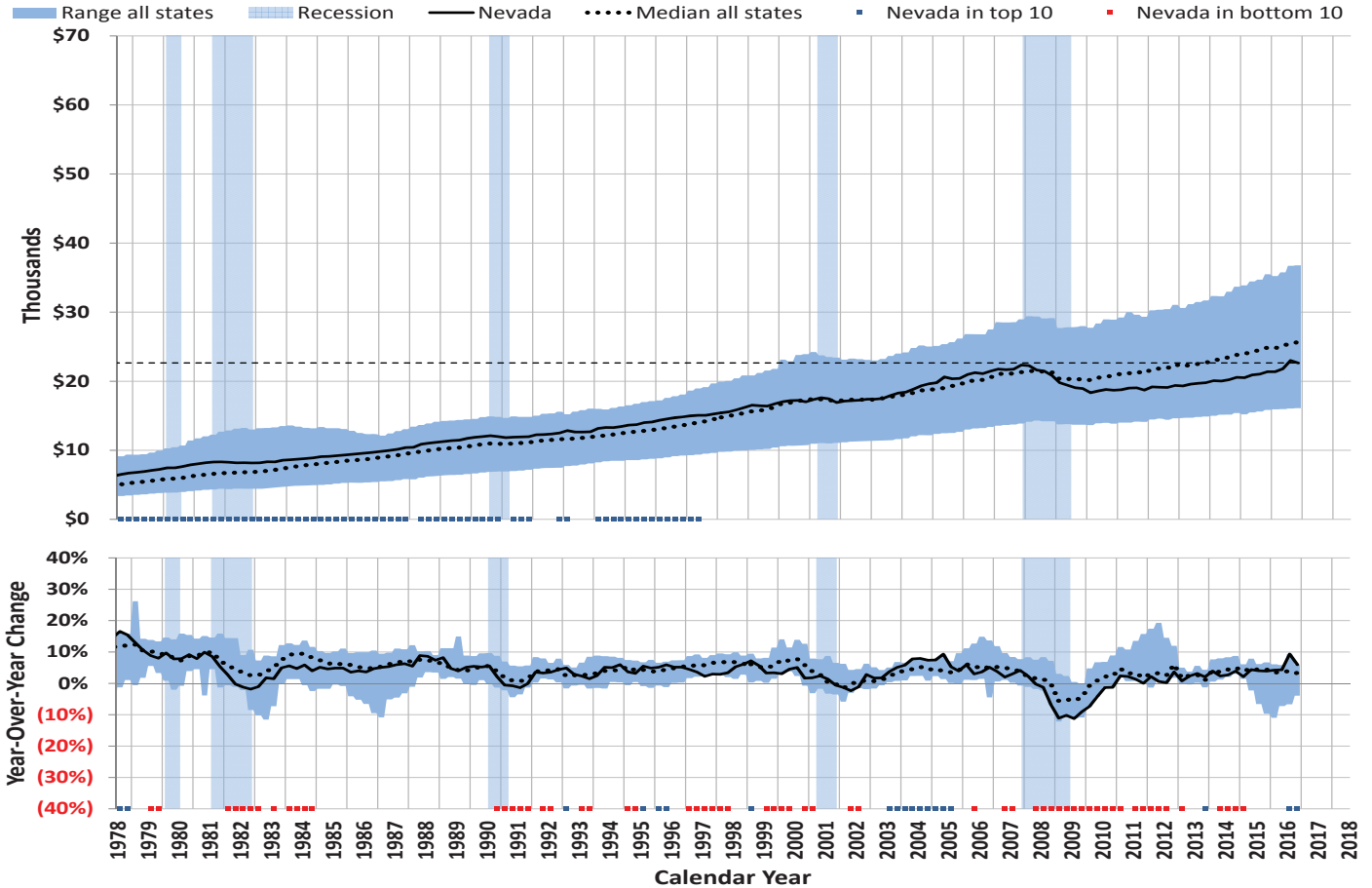
Nevada Single Family Home Permits Issued Each Month



Nevada Total Non-Farm Private & Public Sector Jobs



Per Capita Wages & Salaries



Statewide Employment by Sector

	Leisure & Hospitality				Trade, Transportation & Utilities				Professional Services				Education & Healthcare			
	Yr/Yr Change		Share of Total		Yr/Yr Change		Share of Total		Yr/Yr Change		Share of Total		Yr/Yr Change		Share of Total	
	(thou.)	%	%	Rank	(thou.)	%	%	Rank	(thou.)	%	%	Rank	(thou.)	%	%	Rank
March 2016	1.5	0.4	26.7	1	3.4	1.5	18.5	2	9.5	5.8	13.5	3	6.3	5.3	9.8	4
April 2016	3.6	1.0	26.8	1	4.0	1.7	18.5	2	9.4	5.7	13.5	3	6.7	5.6	9.8	4
May 2016	3.6	1.0	26.8	1	3.4	1.4	18.5	2	8.2	4.9	13.4	3	6.9	5.8	9.8	4
June 2016	5.7	1.7	27.0	1	3.1	1.3	18.5	2	11.9	7.2	13.6	3	6.4	5.3	9.8	4
July 2016	7.1	2.1	27.0	1	4.2	1.8	18.6	2	12.3	7.5	13.5	3	6.8	5.6	9.8	4
August 2016	7.0	2.0	26.9	1	4.7	2.0	18.6	2	9.3	5.5	13.6	3	6.7	5.5	9.8	4
September 2016	7.4	2.2	26.6	1	4.6	1.9	18.5	2	12.1	7.2	13.7	3	6.7	5.5	9.8	4
October 2016	3.4	1.0	26.1	1	3.7	1.5	18.5	2	9.8	5.7	13.8	3	6.6	5.3	9.9	4
November 2016	6.0	1.8	26.0	1	1.6	0.6	18.7	2	8.8	5.1	13.7	3	7.3	5.9	9.9	4
December 2016	8.6	2.5	26.1	1	1.4	0.6	18.8	2	8.0	4.6	13.7	3	5.8	4.7	9.8	4
January 2017	9.8	2.9	26.4	1	4.7	2.0	18.6	2	7.7	4.5	13.8	3	4.9	4.0	9.8	4
February 2017	8.0	2.4	26.4	1	2.5	1.1	18.2	2	9.2	5.4	13.7	3	6.1	4.9	10.0	4
March 2017	7.5	2.2	26.5	1	1.4	0.6	18.1	2	8.3	4.8	13.7	3	4.8	3.8	9.9	4

	Local Government				Construction				Financial Services				Manufacturing			
	Yr/Yr Change		Share of Total		Yr/Yr Change		Share of Total		Yr/Yr Change		Share of Total		Yr/Yr Change		Share of Total	
	(thou.)	%	%	Rank	(thou.)	%	%	Rank	(thou.)	%	%	Rank	(thou.)	%	%	Rank
March 2016	2.1	2.1	7.9	5	7.1	10.8	5.7	6	1.0	4.7	1.7	10	1.3	3.1	3.4	7
April 2016	1.7	1.7	7.7	5	6.6	9.8	5.7	6	1.1	5.4	1.7	10	1.4	3.4	3.3	7
May 2016	1.6	1.6	7.8	5	5.2	7.5	5.7	6	1.0	5.1	1.7	10	1.4	3.3	3.3	7
June 2016	(1.1)	(1.1)	7.4	5	6.0	8.6	5.8	6	0.9	4.5	1.6	10	1.3	3.1	3.4	7
July 2016	3.4	3.7	7.3	5	6.8	9.7	5.9	6	1.0	5.0	1.7	10	1.7	4.0	3.4	7
August 2016	3.2	3.4	7.4	5	5.1	7.0	6.0	6	1.1	5.3	1.7	10	1.7	4.0	3.4	7
September 2016	1.9	1.9	7.6	5	5.3	7.3	5.9	6	1.2	6.0	1.6	10	1.6	3.8	3.3	7
October 2016	4.4	4.5	7.7	5	5.2	6.9	6.1	6	0.9	4.3	1.6	10	1.5	3.5	3.3	7
November 2016	3.0	3.0	7.7	5	5.7	7.6	6.0	6	0.7	3.2	1.6	10	1.3	3.0	3.3	7
December 2016	0.7	0.7	7.7	5	5.8	7.8	6.1	6	0.6	2.7	1.6	10	1.5	3.5	3.4	7
January 2017	2.5	2.5	7.8	5	5.2	7.2	6.0	6	0.6	2.7	1.7	10	1.6	3.7	3.4	7
February 2017	3.1	3.1	7.9	5	5.0	6.9	5.9	6	0.7	3.2	1.7	10	1.6	3.7	3.4	7
March 2017	3.2	3.2	7.9	5	5.9	8.1	6.0	6	0.7	3.2	1.7	10	1.8	4.2	3.4	7

	Other Services				State Government				Federal Government				Information			
	Yr/Yr Change		Share of Total		Yr/Yr Change		Share of Total		Yr/Yr Change		Share of Total		Yr/Yr Change		Share of Total	
	(thou.)	%	%	Rank	(thou.)	%	%	Rank	(thou.)	%	%	Rank	(thou.)	%	%	Rank
March 2016	3.3	9.2	3.1	9	0.8	2.0	3.2	8	0.3	1.7	1.4	11	0.3	2.2	1.1	12
April 2016	3.3	9.1	3.1	9	0.4	1.0	3.1	8	0.1	0.5	1.4	11	1.1	8.0	1.2	12
May 2016	3.3	9.0	3.1	9	0.6	1.5	3.1	8	0.3	1.6	1.4	11	0.9	6.5	1.1	12
June 2016	3.1	8.3	3.1	8	0.3	0.8	2.9	9	0.3	1.6	1.5	11	0.6	4.3	1.1	12
July 2016	3.7	9.9	3.1	8	0.7	1.9	2.8	9	0.3	1.6	1.5	11	1.0	7.4	1.1	12
August 2016	3.7	9.9	3.1	8	0.6	1.7	2.8	9	0.3	1.6	1.4	11	0.2	1.4	1.1	12
September 2016	4.5	12.2	3.2	8	0.3	0.8	3.0	9	0.4	2.2	1.4	11	0.6	4.4	1.1	12
October 2016	4.1	11.1	3.1	8	0.5	1.2	3.1	9	0.4	2.2	1.4	11	0.4	2.9	1.1	12
November 2016	4.1	11.1	3.1	8	0.5	1.2	3.1	9	0.3	1.6	1.4	11	(0.1)	(0.7)	1.1	12
December 2016	3.6	9.6	3.1	8	0.5	1.2	3.1	8	0.5	2.7	1.4	11	0.2	1.4	1.1	12
January 2017	2.3	6.1	3.1	8	(0.5)	(1.3)	2.8	9	0.3	1.6	1.4	11	0.1	0.7	1.1	12
February 2017	2.7	7.0	3.1	8	0.7	1.8	3.1	9	0.3	1.6	1.4	11	0.1	0.7	1.1	12
March 2017	1.3	3.3	3.1	9	0.4	1.0	3.1	8	0.3	1.6	1.4	11	0.4	2.9	1.1	12

	Natural Resources				All Non-Farm Jobs			All Private Non-Farm Jobs			All Public Non-Farm Jobs		
	Yr/Yr Change		Share of Total		Total	Yr/Yr Change		Total	Yr/Yr Change		Total	Yr/Yr Change	
	(thou.)	%	%	Rank	(thou.)	(thou.)	%	(thou.)	(thou.)	%	(thou.)	(thou.)	%
March 2016	(0.4)	(3.6)	0.8	13	1,280.0	38.4	3.1	1,119.9	35.2	3.2	160.1	3.2	2.0
April 2016	(0.3)	(2.7)	0.8	13	1,293.8	40.7	3.2	1,134.8	38.5	3.5	159.0	2.2	1.4
May 2016	(0.3)	(2.7)	0.8	13	1,297.1	37.6	3.0	1,137.5	35.1	3.2	159.6	2.5	1.6
June 2016	(0.3)	(2.6)	0.9	13	1,295.8	39.4	3.1	1,143.9	39.9	3.6	151.9	(0.5)	(0.3)
July 2016	(0.2)	(1.7)	0.9	13	1,299.9	50.0	4.0	1,149.0	45.6	4.1	150.9	4.4	3.0
August 2016	(0.3)	(2.6)	0.9	13	1,303.8	44.5	3.5	1,152.1	40.4	3.6	151.7	4.1	2.8
September 2016	0.0	0.0	0.8	13	1,316.5	47.7	3.8	1,157.5	45.1	4.1	159.0	2.6	1.7
October 2016	0.0	0.0	0.8	13	1,323.3	42.1	3.3	1,161.6	36.8	3.3	161.7	5.3	3.4
November 2016	0.0	0.0	0.8	13	1,327.6	40.1	3.1	1,165.5	36.3	3.2	162.1	3.8	2.4
December 2016	(0.1)	(0.9)	0.8	13	1,325.9	37.0	2.9	1,164.4	35.3	3.1	161.5	1.7	1.1
January 2017	0.0	0.0	0.8	13	1,304.2	40.0	3.2	1,147.1	37.7	3.4	157.1	2.3	1.5
February 2017	0.1	0.9	0.8	13	1,312.7	41.3	3.2	1,150.4	37.2	3.3	162.3	4.1	2.6
March 2017	0.2	1.9	0.8	13	1,317.0	37.0	2.9	1,153.0	33.1	3.0	164.0	3.9	2.4

Per Capita Personal Income

